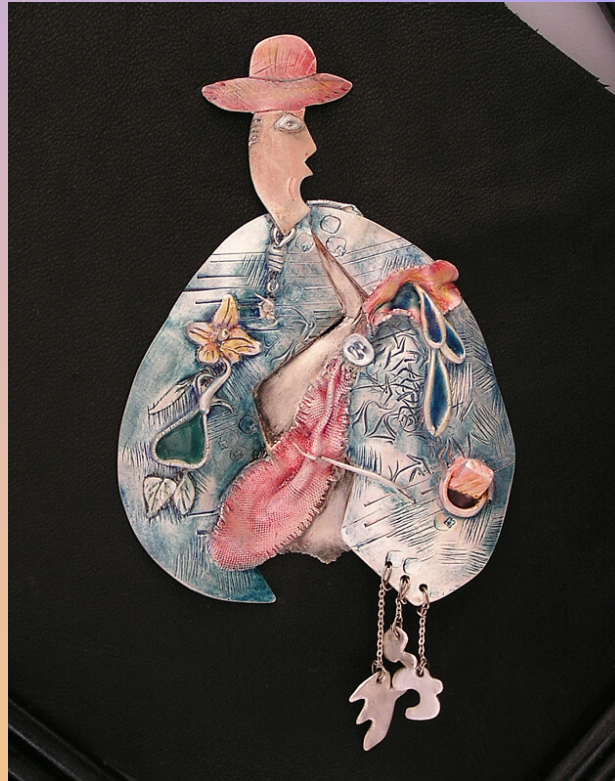


Color Without A Kiln

by Louise Duhamel



“If you ask me what I came to do in this world, I, an artist, I will answer you: ‘I am here to live out loud.’”

- *Emile Zola*

Three Exciting Coloring Methods (without a kiln)

- Pebeo Vitrea glass paints
- Prismacolor pencils
- UV Resin



Advantages of These Methods

- Temperature sensitive items are not harmed
- 3 methods can achieve enamel look or vary dramatically depending on application
- Resin can “capture” objects

“Under the Sea”
Laura Hastings



Prismacolor pencils

Similar in application to pencils over white or colored gesso, oil pastels, or water color pencils.

Deb Karash applies colors to a sand blasted copper sheet and then rivets it to a second layer of sheet metal.



Photo by Larry Sanders

Prismacolor pencils

A Prismacolor pencil on metal clay technique developed by Jeanette Landenwitch:

1. Colors can be applied over a
 - Freshly fired piece (similar to transparent enamel over a white base) or
 - Lightly brushed (similar to transparent enamel over a silver base)

Prismacolor pencils

2. Begin with a palette of 3 to 5 colors

- Apply one color to all pieces in a series before moving to the next color.



"Garden Delight"
Jeanette Landenwitch

Prismacolor pencils

3. Blending

- Use a soft cloth or Q-tip
- Overlap and blend one color to the next
- Place one color on the next to create a third color
- Add turpentine to liquefy the colors
 - Colors bleed together for a softer look
 - Also for high relief areas



Prismacolor pencils

4. Apply Acrylic Medium

- Light coats versus one heavy coat
- Seals colors
- Some colors 'pop' out



"Garden Delight"

Jeanette Landenwitch



“Nothing Fits”

Jeanette Landenwitch



“Windows to My Soul”



“And the Earth Rejoiced”
Louise Duhamel



“Undersea Experience”
Jeanette Landenwitch

Pebeo Vitrea glass paints

- Produces an enamel look
- Once baked (325F degrees) it can be tumbled, polished, and antiqued with Liver of Sulfur
- Beautiful on porcelain (incorporated into your metal clay piece)



“2 for 1 Pendant”
Judi Weers

Pebeo Vitrea glass paints

continued

Vitrea is applied with a small brush.





“Maple Leaf”



“Peacock Goblet”

Judi Hendricks

UV Resin

- Cures in minutes with ultra-violet light
- Advantages
 - Less problems with air bubbles
 - Ambient temperature not as important
 - No need to measure ingredients



"Macaw"
Mechela Verani

UV Resin

1. Preparation

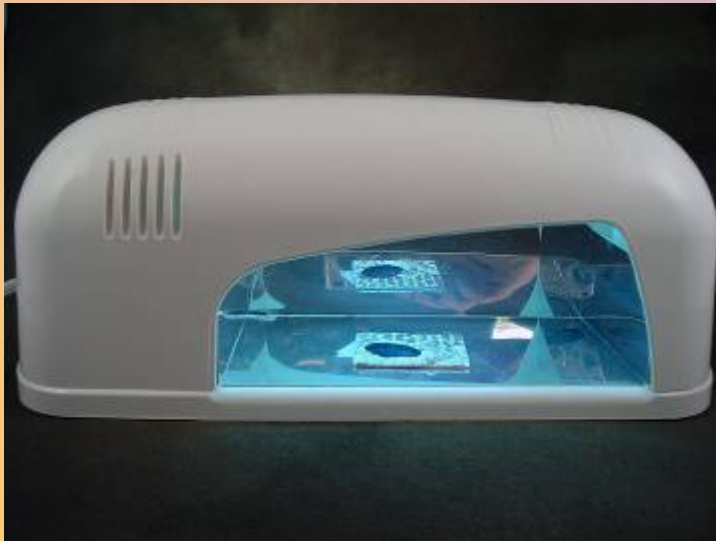
- Clean the metal
- Close openings
- Add color to the resin, if desired
- Heat resin



UV Resin

2. Apply resin

- Alleviate air bubbles
- Cure
- Layering



UV Resin

2. Apply resin continued

- Inclusions



"Feathered Headress"
Tonya Davidson

UV Resin

3. Finishing

- Sanding
- Polishing

Art work by
Judi Weers



“Fly Away”



“Waves”



“Under the Sea”



“Geisha”

Tonya Davidson



“Blue Jay”



“Macaw Circle Pendant”

Mechela Verani



“Under the Sea”
Laura Hastings



“Picture Book”
Louise Duhamel





“Rowling Cottage”
Ivy Solomon



"Changing Seasons"
Jackie Truty



?

“Art is man’s nature; nature is God’s art”
- *P.J. Bailey*