

BREA BEAD WORKS

DIAMOND MAILLE EARRINGS

chainmaille

MATERIALS

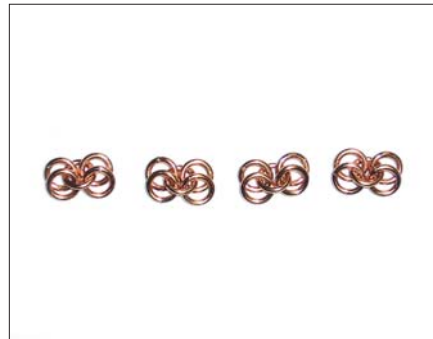
- ▷ Jump rings; 3.5mm I.D. open; 18-gauge [162 qty]
- ▷ Earwire of your choice [1 pair]

TOOLS

- ▷ Flat pliers [2 qty]
- ▷ Chain nose pliers



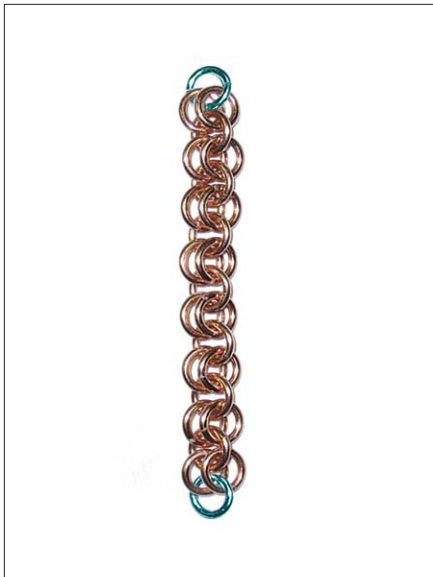
1. Create four sets of 4 closed jump rings linked to 1 jump ring.



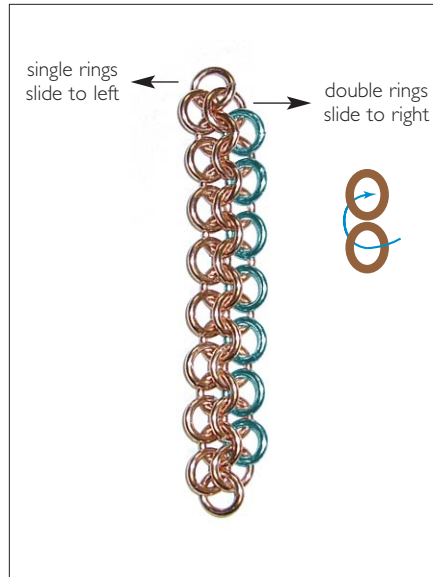
2. Position the 4 jump rings into left and right pairs in preparation for them to be linked together.



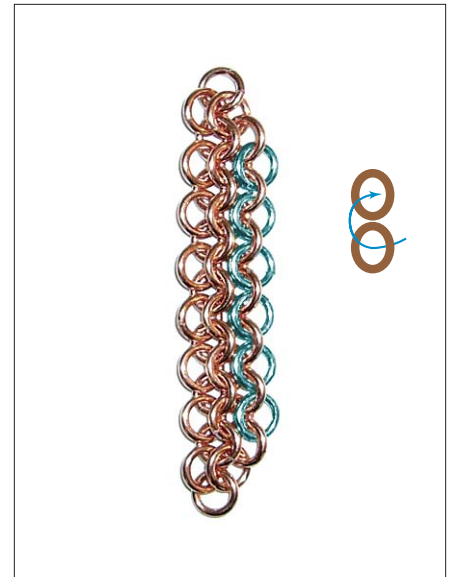
3. Using open jump rings link each set of double rings together.



4. Attach open jump rings to each double ring end.



5. Position rings as pictured above with single rings sliding towards the left and double rings sliding towards the right. Insert single rings (teal rings) through pairs of rings until you have finished the row. **These rings are inserted from top, over to other ring, up, and close ring.**



6. Continue to next row inserting rings in the same fashion but from **bottom, over to other ring, down, and close ring.**



7. Insert 5 rings in row, from top, over to other ring, and up.



8. Insert 4 rings in row, from bottom, over to other ring, and down.



9. Insert 3 rings in row, from top, over to other ring, and up.

*Note: Odd count of rings are inserted from top, over to other ring, and up.
Even count of rings are inserted from bottom, over to other ring, and down.*



10. Insert 2 rings in row, from bottom, over to other ring, and down.



11. To finish one side of earring, insert one ring from top, over to other ring, and up.

Flip work over and repeat steps 5-11 to finish one earring.

Repeat all steps for other side of earrings. Attach to earwire of choice and you are finished.